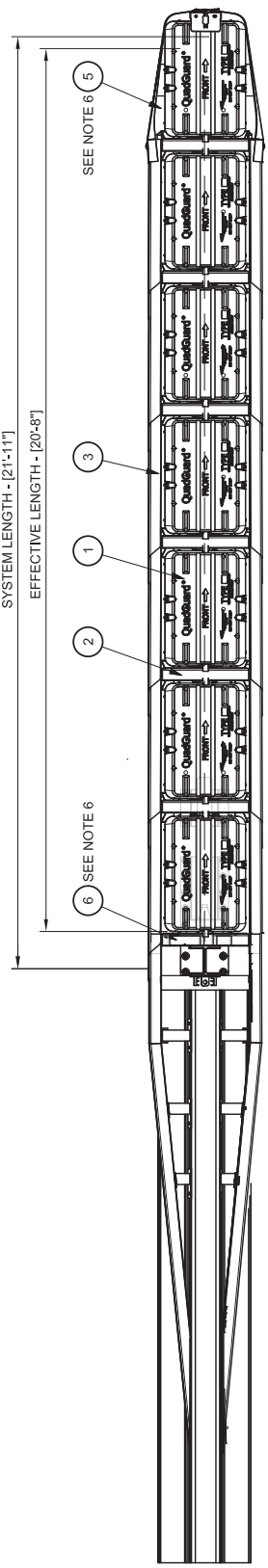
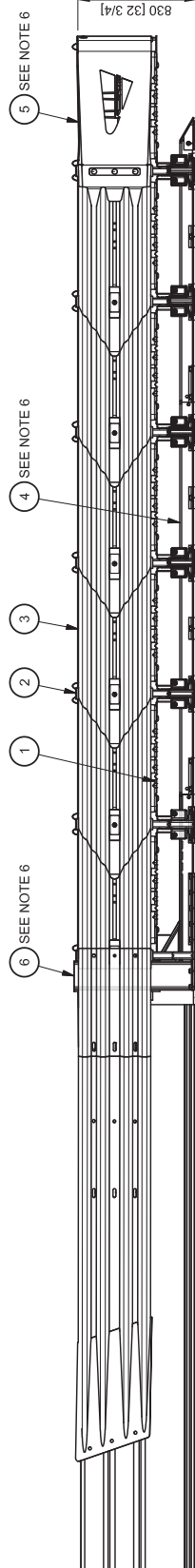


SYSTEM LENGTH - [21'-11"]
EFFECTIVE LENGTH - [20'-8"]



PLAN



ELEVATION
LEFT SIDE

- NOTES:
- IN COMPLIANCE WITH THE AASHTO 2011 ROADSIDE DESIGN GUIDE, MANUFACTURER RECOMMENDS REMOVAL OF ALL CURBS AND ISLANDS TO ENSURE PROPER IMPACT PERFORMANCE.
 - PROVISION SHALL BE MADE FOR REAR FENDER PANELS TO SLIDE REARWARD UPON IMPACT 762 [30.00] MIN.
 - 150 ASPHALT OVER 150 SUBBASE USE #60 LONG THREADED RODS
 - ANCHOR BLOCK IS NOT REQUIRED WHEN USING 6 CONCRETE PAD INSTALLED AGAINST AN IMMOVABLE STRUCTURE SUCH AS A CONCRETE WALL OR ABUTMENT. ANCHOR BLOCK MAY BE LOCATED AT FRONT OF PAD. SEE THE "QUADGUARD M10 SYSTEM PRODUCT MANUAL" FOR A DESCRIPTION OF ITS IMPACT PERFORMANCE CHARACTERISTICS AND DESIGN LIMITATIONS BEFORE PLACING A SYSTEM AT A GIVEN SITE. INFORMATION AND COPIES OF ABOVE MANUAL ARE AVAILABLE BY CALLING CUSTOMER SERVICE DEPARTMENT AT (888) 322-6374.
 - UNITS OF MEASUREMENT ARE MILLIMETERS (INCHES) UNLESS OTHERWISE NOTED.
 - BACKUP, TRANSITION, MONORAIL, AND NOSE ASSEMBLIES ARE NOT INCLUDED IN MODEL NUMBER. ORDER SEPARATELY. TRANSITION ASSEMBLY IS AN ACCESSORY ITEM.
 - THE CENTERLINE OF QUADGUARD M10 SYSTEM SHALL BE PARALLEL WITH CENTERLINE OF BARRIER ±1".
 - CAUTION: CENTERLINE OF QUADGUARD M10 SYSTEM SHALL BE PARALLEL WITH CENTERLINE OF BARRIER ±1". EXCEED 20 [7.6].

REFERENCES	
SERIAL NO.	DIAPHRAGM ASSY.
SALES ORDER	DIAPHRAGM SHIM KIT
EH PROJECT	NOSE ASSY.
DESIGN SPEED	FENDER PANEL ASSY.
NOSE TYPE	BACKUP ASSY.
NO. OF UNITS	MONORAIL ASSY.
	CONCRETE PAD
	TRANSITION ASSY.
	WHEEL DEFLECTOR ASSY.

KEY	
① CARTRIDGE	④ MONORAIL
② DIAPHRAGM	⑤ NOSE ASSEMBLY
③ FENDER PANEL	⑥ BACKUP

625650	A. MASON	DATE	9/5/2020	REVISIONS	QM10024
627518	K. LOONEY	DATE	9/14/2020	FILE	60-45-86.dwg
608236	UNLESS OTHERWISE NOTED, ALL DIMENSIONS ARE IN METERS (INCH DIMENSIONS ACCORDING TO ASME Y14.5M-1994 AND THE SE-003 UNLESS OTHERWISE SPECIFIED).				
627448	Revision				
625637	ECHO Date Rev By Chk.				
618686	REMOVED PLATE				
N/A	3/23/21 A KWL				
N/A					

QUADGUARD® M10 SYSTEM		W/ TENSION STRUT BACKUP	
AUSTRALIA		60-45-86	
1 of 1		TRINITY HIGHWAY	