

4

3

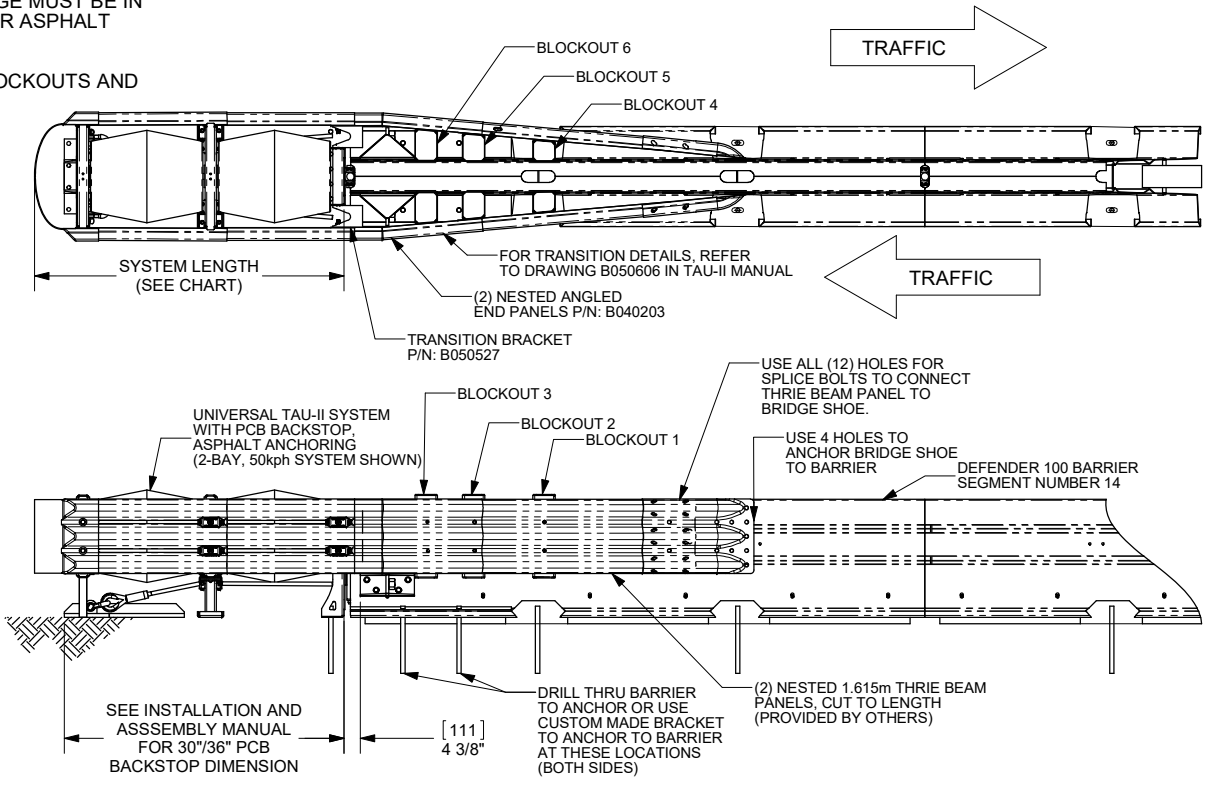
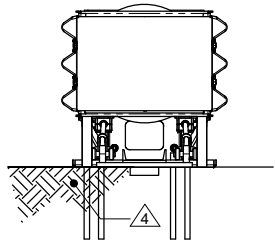
2

1

NOTES UNLESS OTHERWISE SPECIFIED:

- 1. UNIVERSAL TAU-II TO BE INSTALLED PER MANUFACTURER INSTRUCTIONS.
- 2. DIMENSIONS SHOWN ARE REFERENCE. DIMENSIONS IN BRACKETS ARE IN mm.
- 3. SEE ASSEMBLY AND INSTALLATION MANUAL FOR TRANSITION OPTIONS.
- 4. FOUNDATION MATERIAL, SPECIFICATIONS, AND ANCHORAGE MUST BE IN ACCORDANCE WITH BSI FOUNDATION SPECIFICATIONS FOR ASPHALT FOUNDATIONS. REFERENCE BSI DRAWING A040113.
- 5. USE RECTANGULAR WASHERS FOR THE BOLTS AT THE BLOCKOUTS AND THE BRIDGE SHOE.

	DESIGN SPEED		NUMBER OF ELEMENTS	SYSTEM LENGTH	
	mph	kph			
TL-2	30	50	2	6' - 10"	2.08 m
	35+	60	3	9' - 8"	2.95 m
	45	70	4	12' - 5"	3.80 m
TL-3	50	80	5	15' - 4"	4.68 m
	53	85	6	18' - 2"	5.54 m
	55	90	7	21' - 0"	6.41 m
	60+	100	8	23' - 10"	7.27 m
	65	105	9	26' - 8"	8.13 m
	70	110	10	29' - 6"	9.00 m
	72	115	11	32' - 4"	9.85 m
	75	120	12	35' - 2"	10.72 m



D

C

B

A

D

C

B

A

This drawing is provided for informational purposes only and is based upon information provided to Lindsay Transportation Solutions ("Lindsay") by the customer (which may not reflect, among other things, certain information that could be obtained via an in-person visit to, or familiarity with, the installation site). Neither Lindsay nor any of its affiliates is liable for any direct, indirect, incidental, consequential, or punitive damages arising out of or related to the customer's access to, use of, or reliance upon this drawing. This drawing is not a substitute for, and should be used in conjunction with, (i) the previously provided installation/assembly procedures (the "Procedures") and (ii) the professional judgment of the customer and/or the responsible local highway authority (the "Authority"). The product must be assembled and installed in a manner not inconsistent with the Procedures and must comply with federal, state and local standards. Installation and any modifications to the product should be reviewed and approved by the Authority.

© 2017 BARRIER SYSTEMS INC. THE INFORMATION CONTAINED IN THIS DRAWING IS THE SOLE PROPERTY OF BARRIER SYSTEMS INC. ANY REPRODUCTION IN PART OR WHOLE WITHOUT THE WRITTEN PERMISSION OF BARRIER SYSTEMS INC. IS PROHIBITED.		UNLESS OTHERWISE SPECIFIED DIMENSIONS ARE IN INCHES. TOLERANCES ARE: FRACTIONS DECIMAL ANGLES $\pm 1/16$ ± 0.03 $\pm 1/2^\circ$ $\pm 1/32$ ± 0.010 INTERPRET DIMENSIONS AND TOLERANCES PER ASME Y14.5-1994	
APPROVALS		THIRD ANGLE PROJECTION	
DRAWN BY:	NMB	B	NOTES
DRAWN DATE:	7/13/17	A	AP 01301
APPRD BY:	JF	REV	ECN#
APPRD DATE:	7/13/17	DATE	9/28/17

SIZE	DWG NO.	REV.
B	BSI-1707033-AP	B
SCALE	1:25	SHEET
		1 OF 7

LINDSAY™
TRANSPORTATION SOLUTIONS

BARRIER SYSTEMS
180 River Road
Rio Vista, CA 94571
Tel: 925-893-3691
www.barriersystemsinc.com

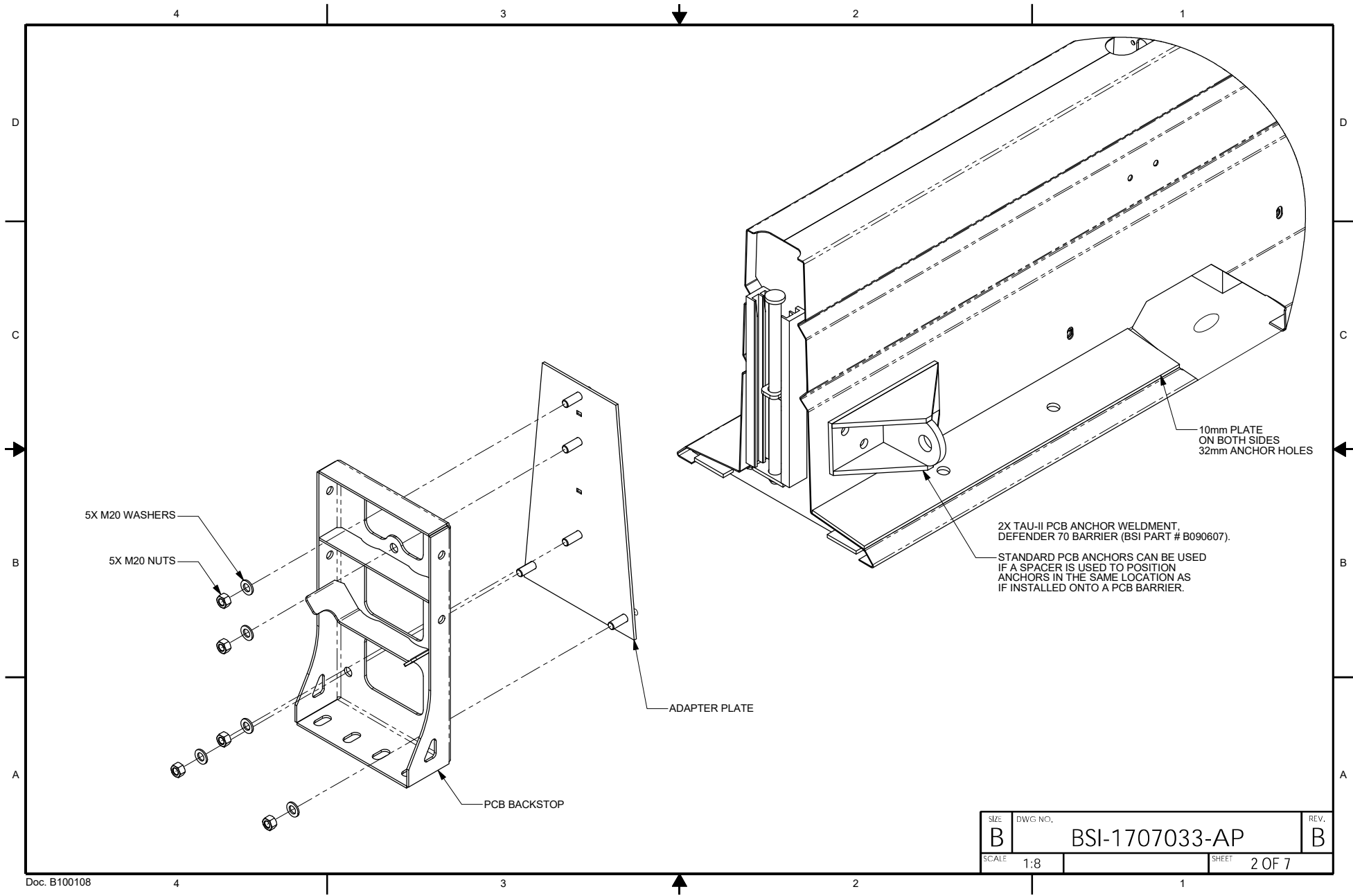
TAU-II TRANSITIONED TO DEFENDER 100 STEEL BARRIER

4

3

2

1



Last Saved by: nvoelke; Thursday, September 28, 2017 3:16:54 PM