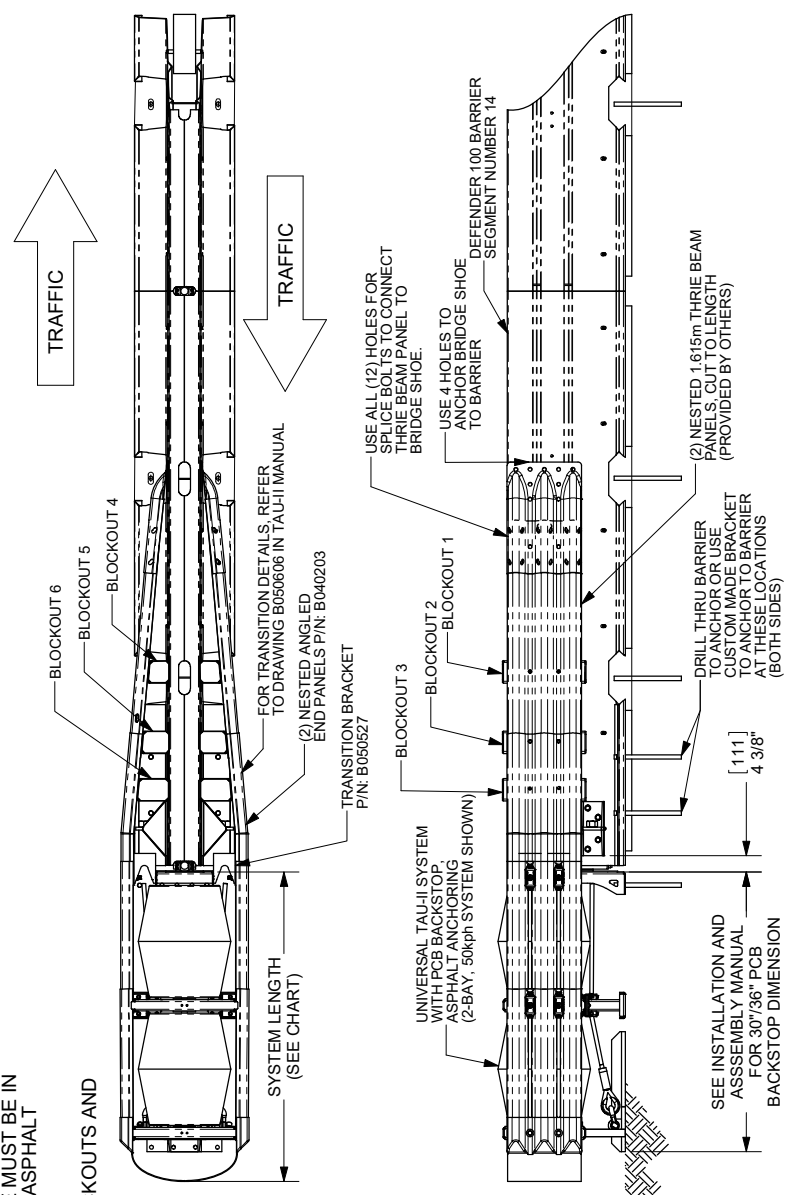
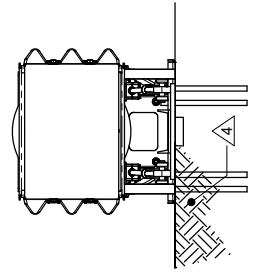


NOTES UNLESS OTHERWISE SPECIFIED:

- UNIVERSAL TAU-II TO BE INSTALLED PER MANUFACTURER INSTRUCTIONS.
- DIMENSIONS SHOWN ARE REFERENCE. DIMENSIONS IN BRACKETS ARE IN mm.
- SEE ASSEMBLY AND INSTALLATION MANUAL FOR TRANSITION OPTIONS.
- FOUNDATION MATERIAL, SPECIFICATIONS, AND ANCHORAGE MUST BE IN ACCORDANCE WITH BSI FOUNDATION SPECIFICATIONS FOR ASPHALT FOUNDATIONS. REFERENCE BSI DRAWING A040113.
- USE RECTANGULAR WASHERS FOR THE BOLTS AT THE BLOCKOUTS AND THE BRIDGE SHOE.

DESIGN SPEED	NUMBER OF ELEMENTS	SYSTEM LENGTH	
		mph	m
30	2	6' - 10"	2.08 m
35+	3	9' - 8"	2.95 m
45	4	12' - 5"	3.80 m
50	5	15' - 4"	4.68 m
53	6	18' - 2"	5.54 m
55	7	21' - 0"	6.41 m
60+	8	23' - 10"	7.27 m
65	9	26' - 8"	8.13 m
70	10	29' - 6"	9.00 m
72	11	32' - 4"	9.85 m
75	12	35' - 2"	10.72 m



LINDSAY™
TRANSPORTATION SOLUTIONS

BARRIER SYSTEMS
182 River Road
Riverside, CA 92504
Tel: 951.880.3471
www.barriersystemsinc.com

TAU-II TRANSITIONED TO DEFENDER 100 STEEL BARRIER

REV. **B**

DATE: 08/07/17

SCALE: 1:25

SHEET: 1 OF 7

© 2017 BARRIER SYSTEMS INC. THIS DRAWING IS THE SOLE PROPERTY OF BARRIER SYSTEMS INC. AND REPRODUCTION WITHOUT THE WRITTEN PERMISSION OF BARRIER SYSTEMS INC. IS PROHIBITED.

UNLESS OTHERWISE SPECIFIED, DIMENSIONS ARE IN INCHES.

FRACTIONS: 1/16 DECIMAL: .000 ANGLE: 1/2

INTERPRET DIMENSIONS AND TOLERANCES PER ASME Y14.5-1994.

THIRD ANGLE PROJECTION

DO NOT SCALE DRAWING

APPROVALS

DESIGNED BY: NMB

DRAWN DATE: 7/13/17

APPROVED BY: JF

APPROVED DATE: 7/13/17

APPROVALS

DESIGNED BY: NMB

DRAWN DATE: 7/13/17

APPROVED BY: JF

APPROVED DATE: 7/13/17

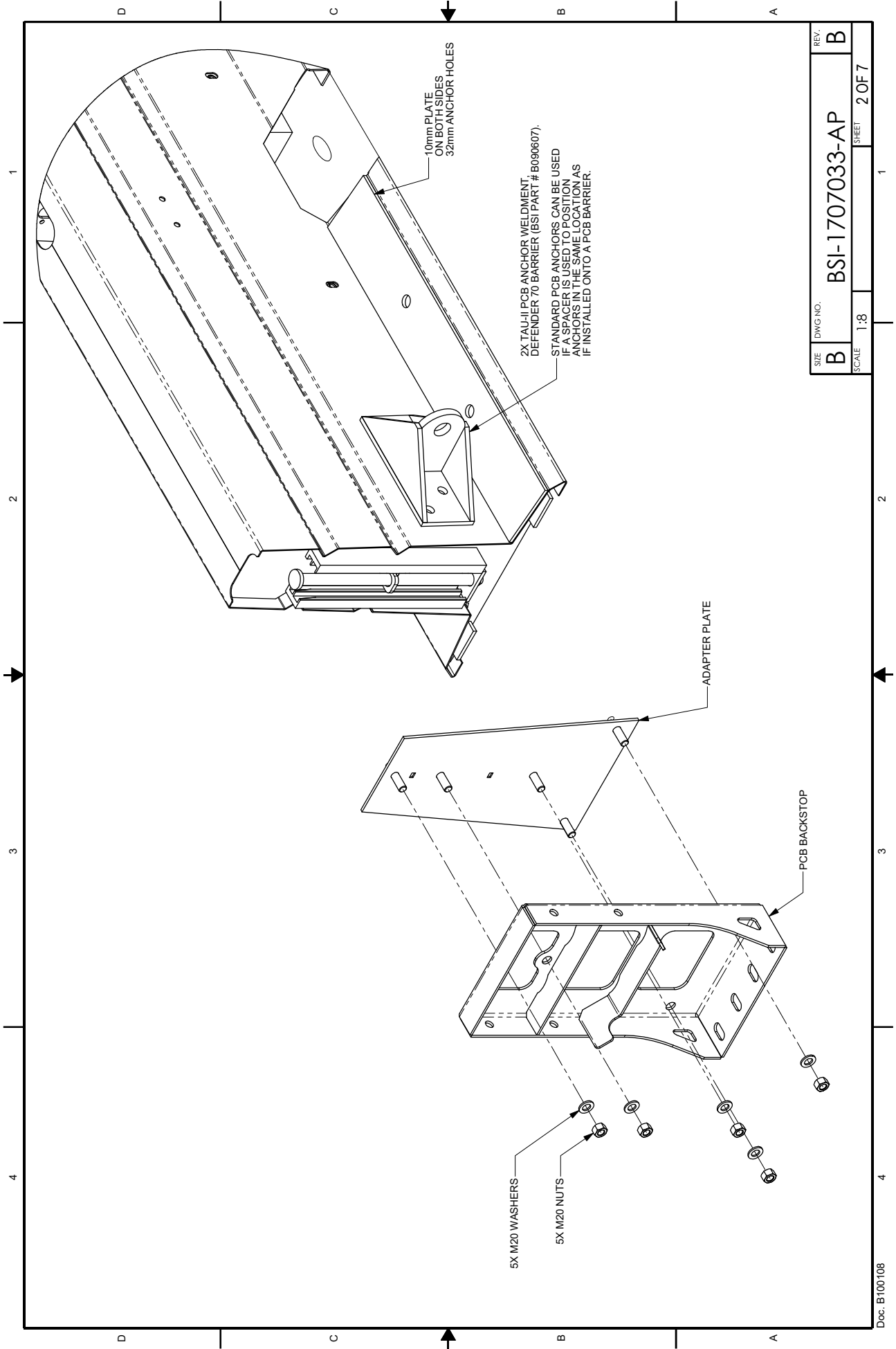
NOTES

DATE: 9/28/17

ECN#: AP 01301

REV: A

This drawing is provided for informational purposes only and is based upon information provided to Lindsay Transportation Solutions. Lindsay Transportation Solutions does not warrant the accuracy of the information that could be obtained via an in-person visit to, or familiarity with, the installation site. Neither Lindsay nor any of its affiliates is liable for any direct, indirect, incidental, consequential, or punitive damages arising out of or related to the customer's access to, use of, or reliance upon this drawing. This drawing is not a substitute for, and should be used in conjunction with, (i) the previously provided installation/assembly procedures (file procedures) and (ii) the professional judgment of the customer and/or the responsible local authority having jurisdiction. The customer must comply with federal, state and local standards. Installation and any modifications to the product should be reviewed and approved by the Authority.



SIZE	DWG NO.	REV.
B	BSI-1707033-AP	B
SCALE	1:8	SHEET 2 OF 7